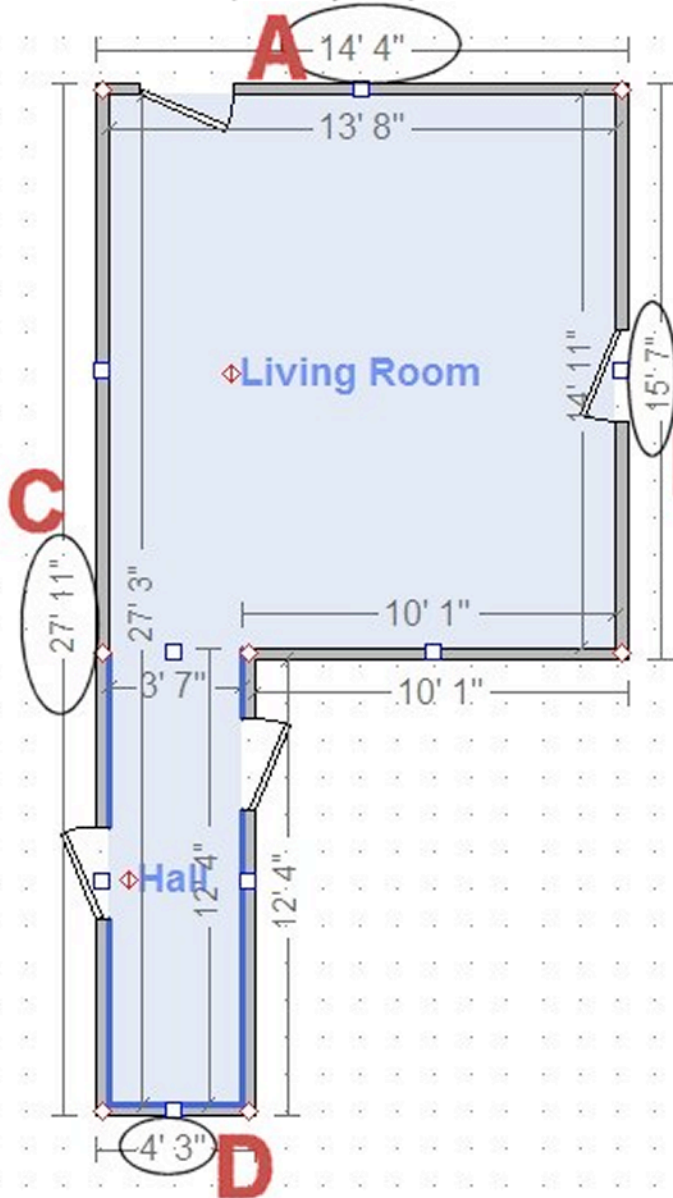


How to measure your room for flooring

If you are heading out to shop for floor-covering - here are some helpful hints on how to measure and draw diagrams of your rooms to bring with you to help with your purchase.

A - (14' 4") is the accurate measure for the width of the Living Room.

C - (27' 11") is the accurate measure for the length of the Living Room and Hall together.



B - (15' 7") is the accurate measure for the length of the Living Room.

D - (4' 3") is the accurate measure for the width of the Hall. It includes the depth of both doors.

NOTE: These dimensions should go through the doorway so that your new flooring can be connected to the existing flooring on the other side of the door.